

Field to Finish

- Updating Linework after a Localization or Transformation
 - Two points are collected with line codes

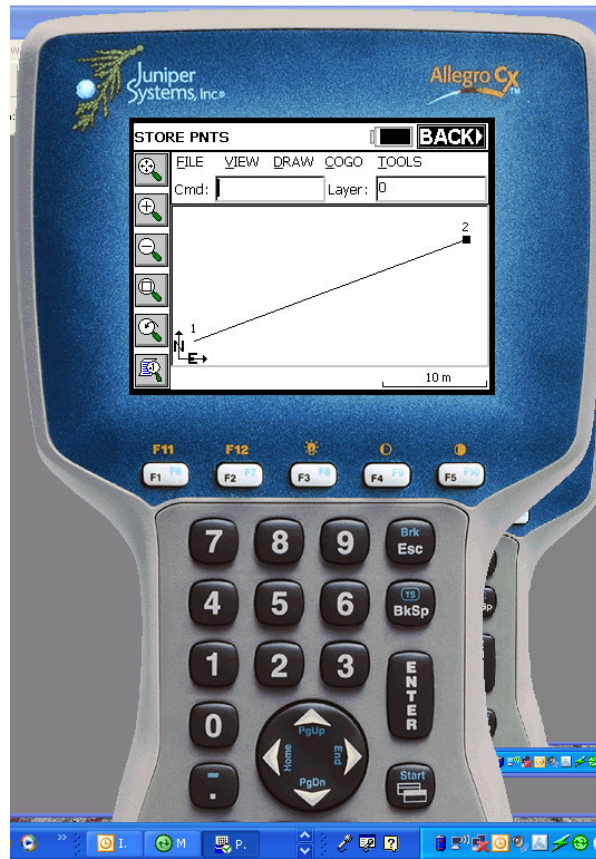
Survey Graph screen



Field to Finish

- Updating Linework after a Localization or Transformation
 - Two points are collected with line codes

Survey Map
screen



Field to Finish

- Updating Linework after a Localization or Transformation
 - Two points are collected with line codes

Point values
are in the
5000 North,
5000 East,
100 Height
range



Point Details		OK
Number: 2		
Northing: 5034.497 m		
Easting: 5037.412 m		
Elevation: 98.849 m		
Description: EP1		
<u>V</u> iew Point Attributes		

Field to Finish

■ Updating Linework after a Localization or Transformation

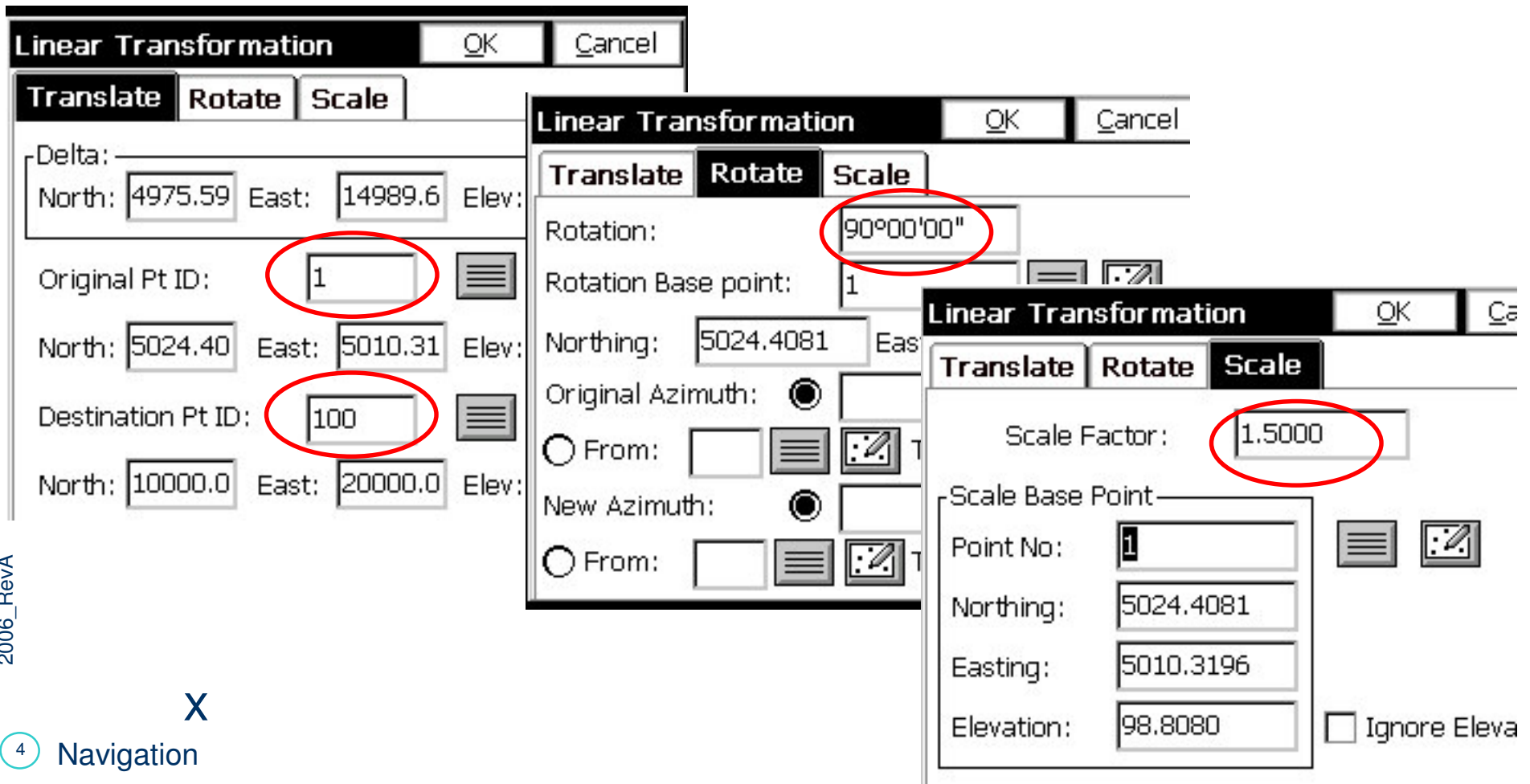
Select point as the target location for a transformation.

Point value:
10000 North
20000 East
250 Height



Field to Finish

- Updating Linework after a Localization or Transformation
 - Translate, Rotate and Scale



The image shows three overlapping dialog boxes for Linear Transformation, each with OK and Cancel buttons.

Left Dialog (Translate):

- Delta: North: 4975.59, East: 14989.6, Elev:
- Original Pt ID: 1
- North: 5024.40, East: 5010.31, Elev:
- Destination Pt ID: 100
- North: 10000.0, East: 20000.0, Elev:

Middle Dialog (Rotate):

- Rotation: 90°00'00"
- Rotation Base point: 1
- Northing: 5024.4081, East:
- Original Azimuth: ☒
- From:
- New Azimuth: ☒
- From:

Right Dialog (Scale):

- Scale Factor: 1.5000
- Scale Base Point:
 - Point No: 1
 - Northing: 5024.4081
 - Easting: 5010.3196
 - Elevation: 98.8080
- ☐ Ignore Eleva

Field to Finish

- Updating Linework after a Localization or Transformation
 - Execute the Field to Finish routine under the TOOLS menu



Field to Finish

- Updating Linework after a Localization or Transformation
 - Linework is updated with new location, azimuth and length (translation, rotation and scale)



Point Details

OK

Number: 2

Northing: 9959.362 m

Easting: 20015.133 m

Elevation: 250.062 m

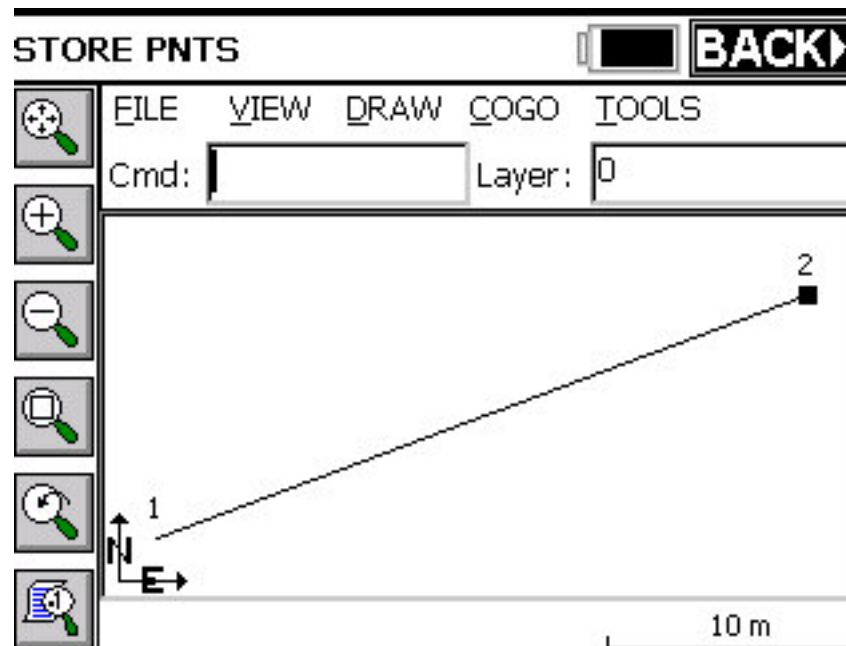
Description: EP1

View Point Attributes

Field to Finish

■ Updating Linework after a Localization or Transformation

Before



After

